

# ESSEC GLOBAL BBA FACTSHEET - 2025/2026



Created in 1907, ESSEC Business School is an Academic Institution of excellence which is a world-school with French roots and global impact, blending excellence with distinctiveness, as reflected in the new strategy **Enlighten. Lead. Change.**  
**ESSEC Global BBA: Ranked #1 four-year BBA program in France by Le Point, and ranked #2 by L'Étudiant & Challenges.**  
**Master of Science in Management: Ranked #10 by the Financial Times.**

## COURSE INFORMATION

**Course offer and catalogue available on the website:** <https://sites.google.com/essec.edu/bbaincomingexchange/menu/academics/course-offer>

**Electronic Transcripts** are available on our website. Please note that we do not convert our grades for international universities. Each partner university will convert the grades obtained by its students according to its own criteria.

**Grade and Final Transcript:** <https://sites.google.com/essec.edu/bbaincomingexchange/menu/after-the-exchange/grades-and-final-transcript>

**Online Learning Agreement:** For EU partners and incoming students, please send OLAs to [bba-2ndcycle@essec.edu](mailto:bba-2ndcycle@essec.edu) (Academic Team) and not to the Study Abroad Team.

**Re-sit exams:** No re-sits or make-up exams are available to students.

## HOUSING, HEALTH, VISA AND BUDGET

**Near-campus housing with Alegessec** is available, and priority is given to international students if they apply by the stipulated deadline.

Alegessec (ESSEC housing department) offers 1,095 studios across four residences in Cergy only 35 minutes from Paris. Discover a student life rich in cultural exchanges – over 50% are international students – and the pleasure of living near your campus and classmates.

**For more information, please check the website:**  
<http://www.essec.edu/en/pages/about-essec/essec-business-school/housing/>

### Medical cover

International students who enrol in a French educational institution can be obliged to enrol in the French Social Security Healthcare system (without charges) depending on the length of stay and/or the country of origin.

	One-Year or DD Students	One-Semester Exchange Students
EU citizens	European Health Insurance Card (EHIC) and / or Private International Insurance <b>One compulsory – Both recommended</b>	European Health Insurance Card (EHIC) and / or Private International Insurance <b>One compulsory – Both recommended</b>
Non-EU citizens	French Social Security <b>Compulsory</b> Private International Insurance <b>recommended</b>	Private International Insurance <b>Compulsory</b>

**ESSEC is partners with International SOS, assistance service provided to students during their academic study abroad.**



## SEMESTER INFORMATION

### Fall 2025 semester

#### Alegessec housing check-in:

Late August, 2025 TBC

#### Latest arrival date:

August 28<sup>th</sup>, 2025 TBC

#### Orientation Session\*:

August 29<sup>th</sup>, 2025 TBC

#### Classes:

September 1<sup>st</sup> - November 28<sup>th</sup>, 2025 TBC

#### Exams:

December 3<sup>rd</sup> - 19<sup>th</sup>, 2025 (inclusive) TBC

#### Earliest departure date:

December 20<sup>th</sup>, 2025

#### Grade transcripts:

Electronic transcript

### Spring 2026 semester

#### Alegessec housing check-in:

Anytime between December 2025 -

February 2026 TBC

#### Latest arrival date:

February 26<sup>th</sup>, 2026 TBC

#### Orientation Session\*:

February 27<sup>th</sup>, 2026 TBC

#### Classes :

March 9<sup>th</sup> - May 29<sup>th</sup>, 2026 TBC

#### Exams:

June 2<sup>nd</sup> - 12<sup>th</sup>, 2026 (inclusive) TBC

#### Earliest departure date:

June 13<sup>th</sup>, 2026 TBC

#### Grade transcripts:

Electronic transcript

*\*Compulsory attendance.*

## Visa & Residence Permit

EU students do not need to apply for a visa.

Non-EU students have to check with the French Embassy in their home country.

For more information, please check the website:

<https://sites.google.com/essec.edu/bbaincomingexchange/menu/prepare-your-arrival/visa-and-residence-permit>

Average budget 2024/2025 (in €/month)	
<b>Alegessec housing</b> (single studio based)	722)-849) *
<b>International health insurance</b>	according to your compagny
<b>Transportation</b>	120.00
<b>Food / Groceries</b>	304.00
<b>Personal expenses</b>	245.00
<b>Textbooks / School Supplies</b>	8.00

Numbers based on the Fall 2024 student satisfaction survey

\* Before deduction of the housing subsidy, if eligible

## APPLICATION INFORMATION

### Online Nominations (partners)

Fall: 5 April – 30 April

Spring: 5 October – 30 October

Partner coordinators will be sent information by email nearer the time.

### Online Applications (students)

Fall: 5 May - 30 May

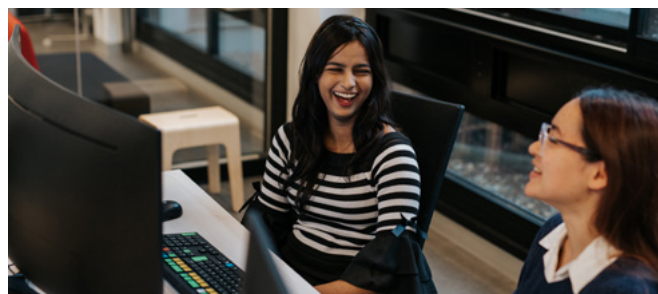
Spring: 5 November - 30 November

Our application is completely online. Nominated students will receive information by email nearer the application period with procedure on how to submit their application form.

Students will need to meet the following requirements and we will NOT ask for supporting documents. (except for the French language).

- Good academic results.
- At least a B2 level in English language according to CEFR scales.
- A minimum B2 level in French language. (to take business classes in French only)

Acceptance letters will be made available progressively on the students' intranet (Myessec) as validations are completed.



## MANDATORY ONLINE ENROLLMENT (AFTER ACCEPTANCE)

Online enrollment has to be completed BEFORE arrival. The following documents will need to be uploaded by the student:

- ID page of passport (ID card accepted for EU citizens)
- photo (passport format)

Warning: A service fee of €115 will be requested and must be paid by credit card to the Registrar.

## CONTACT INFORMATION

**Institution name:** ESSEC Business School

### ESSEC Global BBA

3 avenue Bernard Hirsch - CS 50105

95021 CERGY-PONTOISE CEDEX - FRANCE

+33 (0)1 34 43 3000 (main switchboard)

**www:** <http://www.essec.edu/en/global-bba/>

**www BBA Incoming Exchanges:** <https://sites.google.com/essec.edu/bbaincomingexchange/home>

■ **Academic Director,** Ms Christina Terra

■ **Director of Studies,** Ms Corinne Peiffert

### ■ International Relations Manager

For enquiries from universities relating to the development and management of exchanges with ESSEC Global BBA

Ms. Tracey MOORE - [tracey.moore@essec.edu](mailto:tracey.moore@essec.edu)

### ■ Study Abroad Team (Incoming Students)

For enquiries from students and partners concerning forthcoming exchanges  
Mrs Jessie Leconte - Coordinator  
Ms Elsa Dominguez De La Torre - Coordinator  
Ms Zineb Lagnani - Apprentice

**bba-studyabroad@essec.edu**

+33 (0)1 34 43 3297 / 2853 / 9775

**Erasmus+ code:** F CERGY 03

### ■ Office of the Registrar:

<https://www.officeoftheregistrar.essec.edu/>